



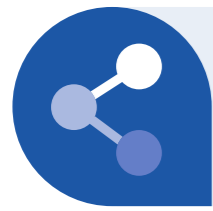
OUTCOME INDICATORS FOR A RESILIENT FUTURE

UNDERPIN is a flagship project under the EU Mission on Adaptation to Climate Change, that will design, co-develop, and validate a new monitoring, evaluation, and learning (MEL) framework.

WHAT WE OFFER



**OUTCOME INDICATOR
FRAMEWORK**



**NOVEL DATA
SOURCES**



**USER-FRIENDLY
DASHBOARD**



**CITIZEN SCIENCE
& JUSTICE LENS**

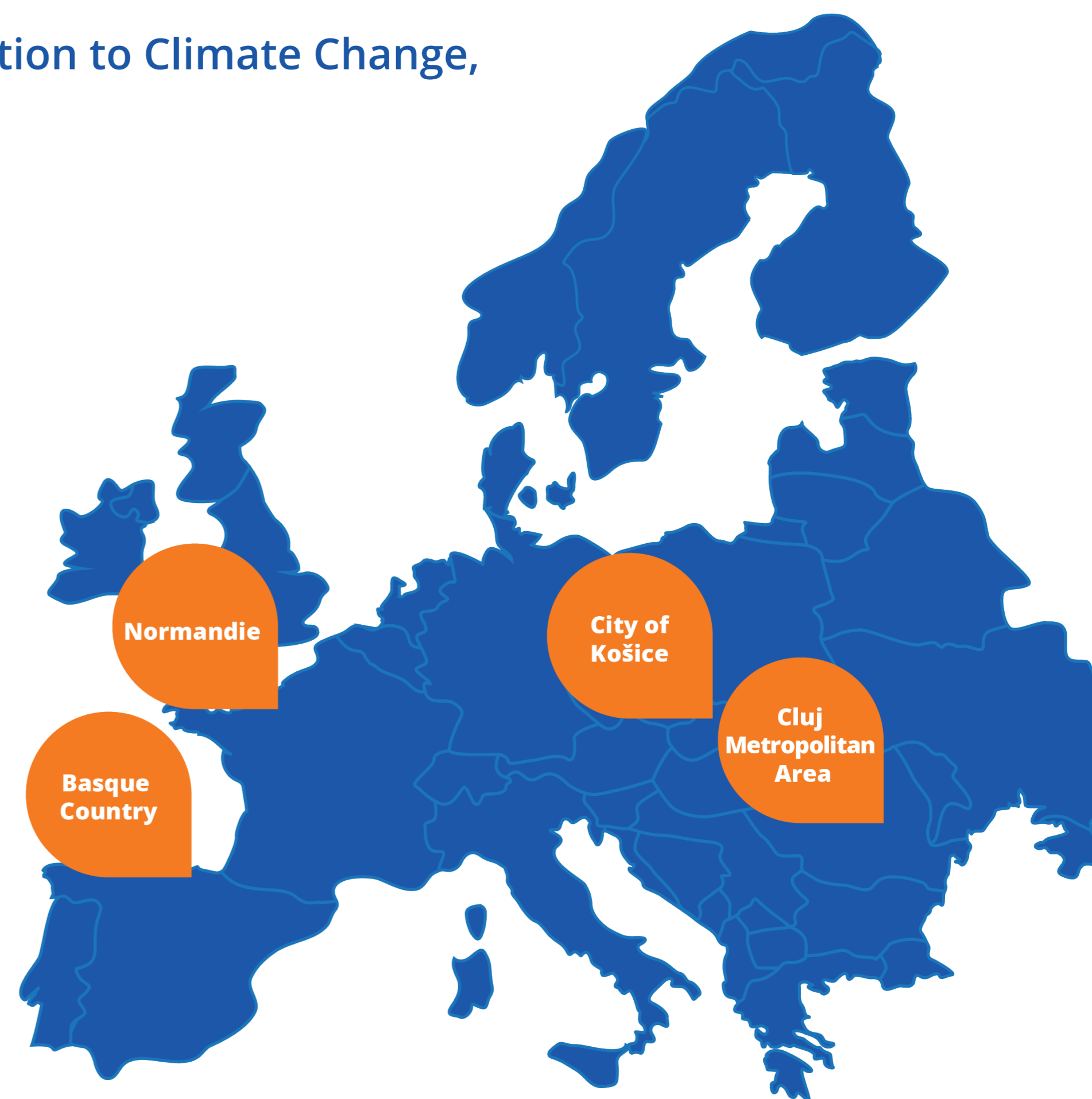


**REGIONAL CO-CREATION
AND VALIDATION**

REGIONAL USE CASES

These four regions across Europe currently face a range of climate challenges, including heat stress, air quality concerns, wildfires, erosion, and flooding.

UNDERPIN directly and indirectly engage local and regional authorities, regional citizens, including vulnerable communities, and seek to replicate learnings to additional EU Member States.



FOLLOW US: **UNDERPIN Climate**     underpinclimate.eu



 Funded by
the European Union



PART OF THE

EU MISSIONS

ADAPTATION TO CLIMATE CHANGE

 Funded by
the European Union

Funded by the European Union. Views and opinions expressed are however those of the author(s) only and do not necessarily reflect those of the European Union or the European Climate, Infrastructure, and Environment Executive Agency (CINEA). Neither the European Union nor the granting authority can be held responsible for them.